

SPECIFICATIONS OF FCV-1150

GENERAL

1. Operating Frequencies

The synthesized transceiver works with dual frequencies in 28 to 200 kHz. Specify transducer type when ordering, among 28/38/50/68/82/88/107/150/200 kHz

2. Output Power

1/2/3 kW

3. Power Reduction

Auto/10 to 100 % (in 10 % step)

4. Tx Rate

20 to 3000/min

5. Pulselength

Short1/Short2/Standard/Long/Manual (Manual Pulse length: 0.1 to 5.0 ms)

6. RX Band

Narrow/Standard/Wide

7. Amplifier

High dynamic range

DISPLAY

1. Display

12.1" color LCD (SVGA: 800 x 600)

2. Color

8/16/64

3. Brightness

1000 cd/m²

4. Ranges

5 to 3000 m (Split Range available)

5. Shift

0 to 2000 m

6. Marker Zoom/Bottom-lock Expansion Ranges

5 to 2000 m

7. Display mode

Single (HF/LF), Dual, Single + Zoom, two Custom Modes
Zoom Mode (Bottom Lock, Bottom Zoom, Marker Zoom), Mix Mode, Nav data, A-scope

8. Picture Advance Direction

Left, Right, L/R

9. Picture Advance Speed

Stop, 1/16, 1/8, 1/4, 1/2, 1/1, 2/1, 4/1, Synchronized for own ship speed

10. Alarms

Audio-visual alarms for a preset depth of water and fish and a preset value of water temperature

11. Language

English, French, Spanish, German, Italian, Portuguese, Swedish, Danish, Norwegian, Finnish, Greek, Chinese, Japanese, Thai, Korean, Russian

12. Others

Auto Mode, Interference, Clutter, TVG, Color Erase, Hue, Temp Graph, A-scope, White Marker

Added Function

Heaving compensation

DATA INTERFACE

NMEA0183 (Ver. 1.5, 2.0 or 3.0; Any talker)

Input: BWC, GGA, GLC, GLL, GNS, GTD, HDG, HDT, MDA, MTW, MWV, RMA, RMB, RMC, VHW, VTG, XTE, HVE, att, hve, req

Output: DBT, DBS, DPT, MTW, TLL, SDmrk, VHW, RMB, dat
Other LAN

ENVIRONMENTAL CONDITIONS

Display Unit: -15 °C to +55 °C (IEC60945 tested)
Water Resistance: IP55 (When flush mounted)

POWER SUPPLY

12-24 VDC, 50 W max. 100/110/220/230 VAC with optional rectifier

EQUIPMENT LIST

Standard

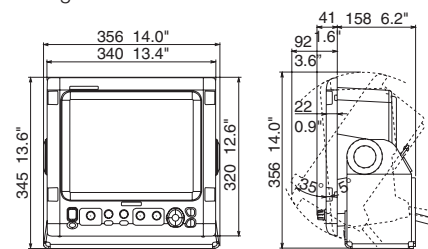
1. Display Unit
2. Installation Materials and Standard Spare Parts

Option

1. Speed/temperature sensor
ST-02MSB (Thru-hull, bronze), ST-02PSB (Thru-hull, plastic)
2. Temperature sensor
T-02MSB (Thru-hull, bronze), T-02MTB (Transom, bronze), T-03MSB (Thru-hull, bronze)
3. NMEA cable MJ-A6SPF0003-050C (5 m)
CO-SPEVV-SB-C 2P x 0.2SQLF (5/10/15 m)
4. Rectifier PR-62
5. Transducer (Specify the frequency and type of transducer)
 - 1 kW: 28F-8 (28 kHz), 50B-6/6B (50 kHz), 50B-9B (50 kHz), 68F-8H (68 kHz), 88B-8 (88kHz), 200B-5S (200 kHz), 50/200-1T (50/200 kHz), 50/200-12M (50/200 kHz)
 - 2 kW: 28F-18 (28 kHz), 28BL-6HR (28 kHz), 38BL-9HR (38 kHz), 50B-12 (50 kHz), 50BL-12/12HR (50 kHz), 82B-35R (82 kHz), 88B-10 (88 kHz), 200B-8/8B (200 kHz)
 - 3 kW: 28F-24H (28 kHz), 28BL-12HR (28 kHz), 38BL-15HR (38 kHz), 50F-24H (50 kHz), 50BL-24H/24HR (50 kHz), 68F-30H (68 kHz), 88F-126H (88 kHz), 100B-10R (100 kHz), 150B-12H (150 kHz), 200B-12H (200 kHz)

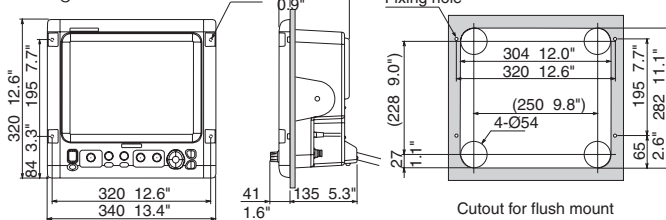
DISPLAY UNIT FCV-1150

8.2 kg 18.1 lb

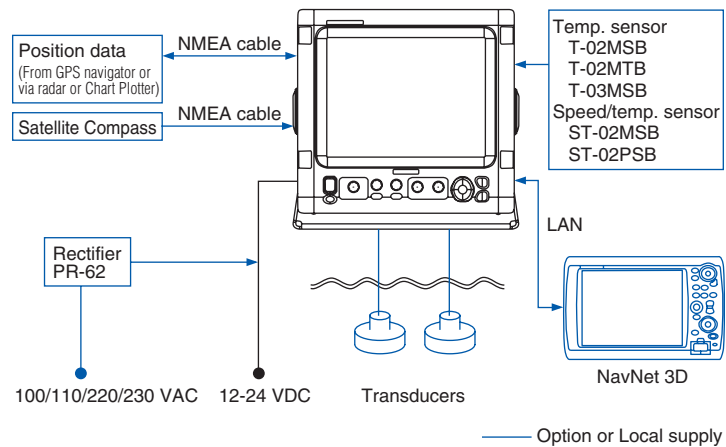


Flush mount

6.8 kg 15.0 lb



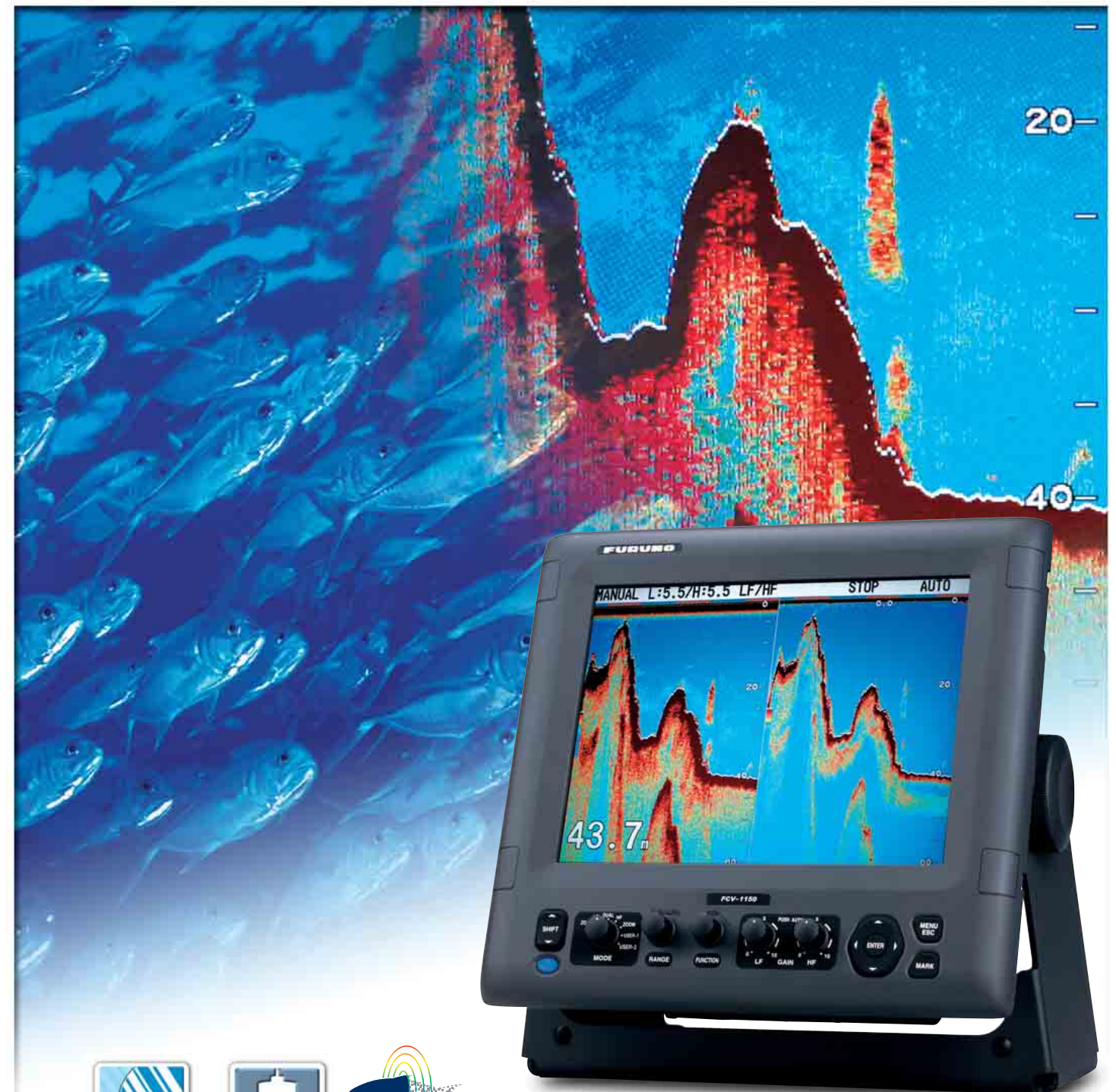
INTERCONNECTION DIAGRAM



All brand and product names are registered trademarks, trademarks or service marks of their respective holders.

SPECIFICATIONS SUBJECT TO CHANGE WITHOUT NOTICE

COLOR LCD SOUNDER
FCV-1150



FURUNO ELECTRIC CO., LTD.
Nishinomiya, Hyogo, Japan
www.furuno.co.jp

FURUNO U.S.A., INC.
Camas, Washington, U.S.A.
www.furunousa.com

FURUNO (UK) LIMITED
Havant, Hampshire, U.K.
www.furuno.co.uk

FURUNO FRANCE S.A.S.
Bordeaux-Mérignac, France
www.furuno.fr

FURUNO ESPAÑA S.A.
Madrid, Spain
www.furuno.es

FURUNO DANMARK AS
Hvidovre, Denmark
www.furuno.dk

FURUNO NORGE A/S
Ålesund, Norway
www.furuno.no

FURUNO SVERIGE AB
Västra Frölunda, Sweden
www.furuno.se

FURUNO FINLAND OY
Espoo, Finland
www.furuno.fi

FURUNO POLSKA Sp. z o.o.
Gdynia, Poland
www.furuno.pl

FURUNO DEUTSCHLAND GmbH
Rellingen, Germany
www.furuno.de

FURUNO EURUS LLC
St. Petersburg, Russian Federation
www.furuno.com.ru

FURUNO HELLAS LTD.
Piraeus, Greece

09065U Printed in Japan
Catalogue No. E-403b

FURUNO
World Wide
Warranty 2 YEARS



High performance 12.1" LCD digital fish finder delivers super clear view of fish targets!

The FCV-1150 is a new color digital sounder designed for a variety of professional fishing operations. It features a high-brightness, bonded 12.1" LCD display with AR-coated glass filter and anti-polarized sunglass filter, providing superior viewing even in direct sunlight. You can choose to display the echo presentation in 8, 16, or 64 colors, with color assignment dependent on the strength of the returned echo. The FURUNO Free Synthesizer (FFS) Transceiver allows for a wide selection of operating

frequencies. You may choose any two frequencies between 28 and 200 kHz to best suit your fishing operation. Output power is selectable from 1, 2 or 3kW. A wide variety of display modes and functions are available that provide skippers with simple and intuitive information. The FCV-1150 can also be connected to a FURUNO satellite compass to compensate for heaving, thus providing unwavering, stable detection even in rough seas.



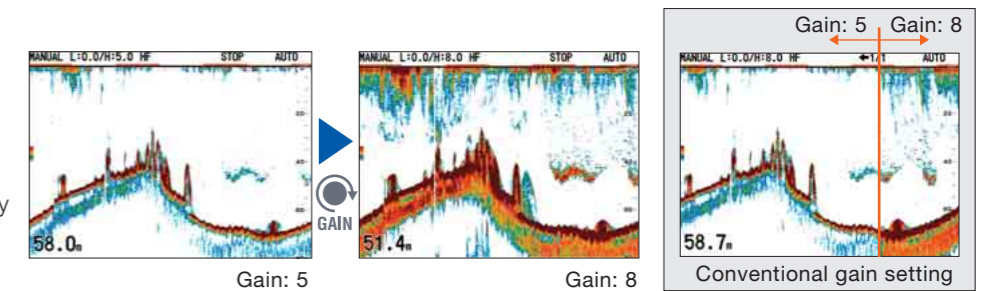
COLOR LCD VIDEO SOUNDER FCV-1150

- ▶ High-brightness (1,000 CD) 12.1" 'Fog-Free' LCD with AR coated glass filter and anti-polarized sunglass filter
- ▶ Post-processing gain control applies changes to gain setting to all existing returns on the display
- ▶ Available Heaving Compensation provides stable echo presentation even in rough seas
- ▶ FURUNO Digital Filter delivers crystal clear target presentation
- ▶ Furuno Free Synthesizer (FFS) allows for adjustable operating frequency
- ▶ Integration into the NavNet 3D network is available
- ▶ White Edge bottom discrimination



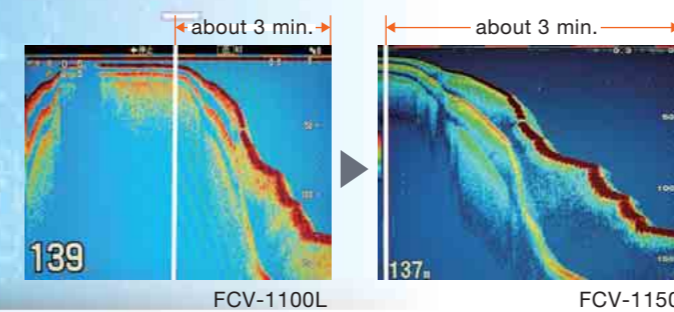
Quick Gain Setting

With conventional gain controls, changes are made for new echoes only when a change in the setting is applied. With the FCV-1150's Quick Gain control, changes in the Gain setting are applied to new echoes as well as all of the echoes already on the screen. Because the changes are applied to both new and existing returns, you will be able to quickly and easily find the right Gain setting for your conditions.



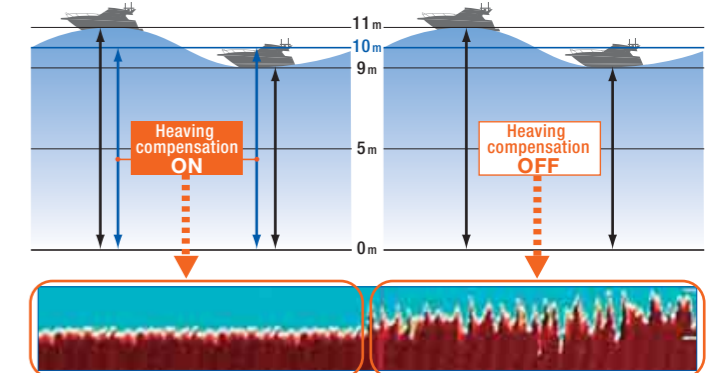
Faster Transmission Rate For Detailed Detection

The rate of transmission is increased by more than 30% compared to current conventional fish finders. As a result, more detailed information about underwater conditions can be gained through the same sounding interval. This means that the transmission speed is raised in shallow waters, and lowered in deep waters. The high-speed transmission provides for detailed detection of seabed targets.



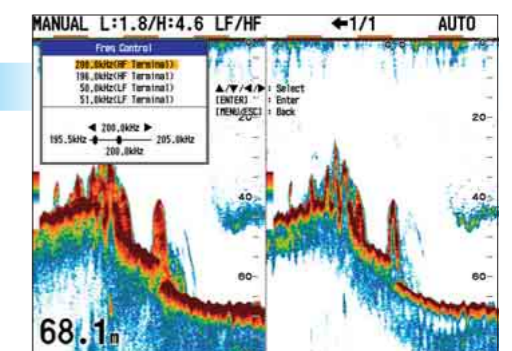
Heaving Compensation

Even in rough sea conditions, the FCV-1150 compensates for heaving, presenting a display without undulations caused by the sea conditions. FURUNO SC-30, SC-50 or SC-110 required.



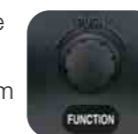
Operating Frequency Adjustment

If a FURUNO transducer is used, the operating frequency is automatically set in the menu. The user can shift the operating frequency at any time from the menu. With the FURUNO 82B-35R transducer, the operator can select any operating frequency from 65 to 110kHz. This feature is particularly useful for vessels targeting many different species, or when the fish finders of other ships in the area cause interference.



Function Key

An often-used function such as TVG (Time Varied Gain) can be programmed to register with the press of the Function key. This will give you access to any menu item without opening the menu.



- Functions which can be registered**
- Pic. Advance / Interference / Color Erase / Clutter / White Line / White Marker / TVG / STC / Bottom Zone / A-Scope / Split Range / Auto Shift / Freq Choice / Freq Control

Network integration with NavNet 3D



Via Ethernet interface, the FCV-1150 brings professional fish finding technologies onto the NavNet 3D network. This advanced configuration enables you to install the FCV-1150 anywhere onboard you wish within the reach of a LAN cable. Auto range, auto gain, shift and zoom controls can be performed from both NavNet 3D and the FCV-1150*.

* Manual gain control and mode selection can only be done by the FCV-1150.